





SS-240CA-56*	90-305Vac	241.2W	28-56V	36-56V	3.3-6.7A
--------------	-----------	--------	--------	--------	----------

8%	0.98	93%	90
----	------	-----	----



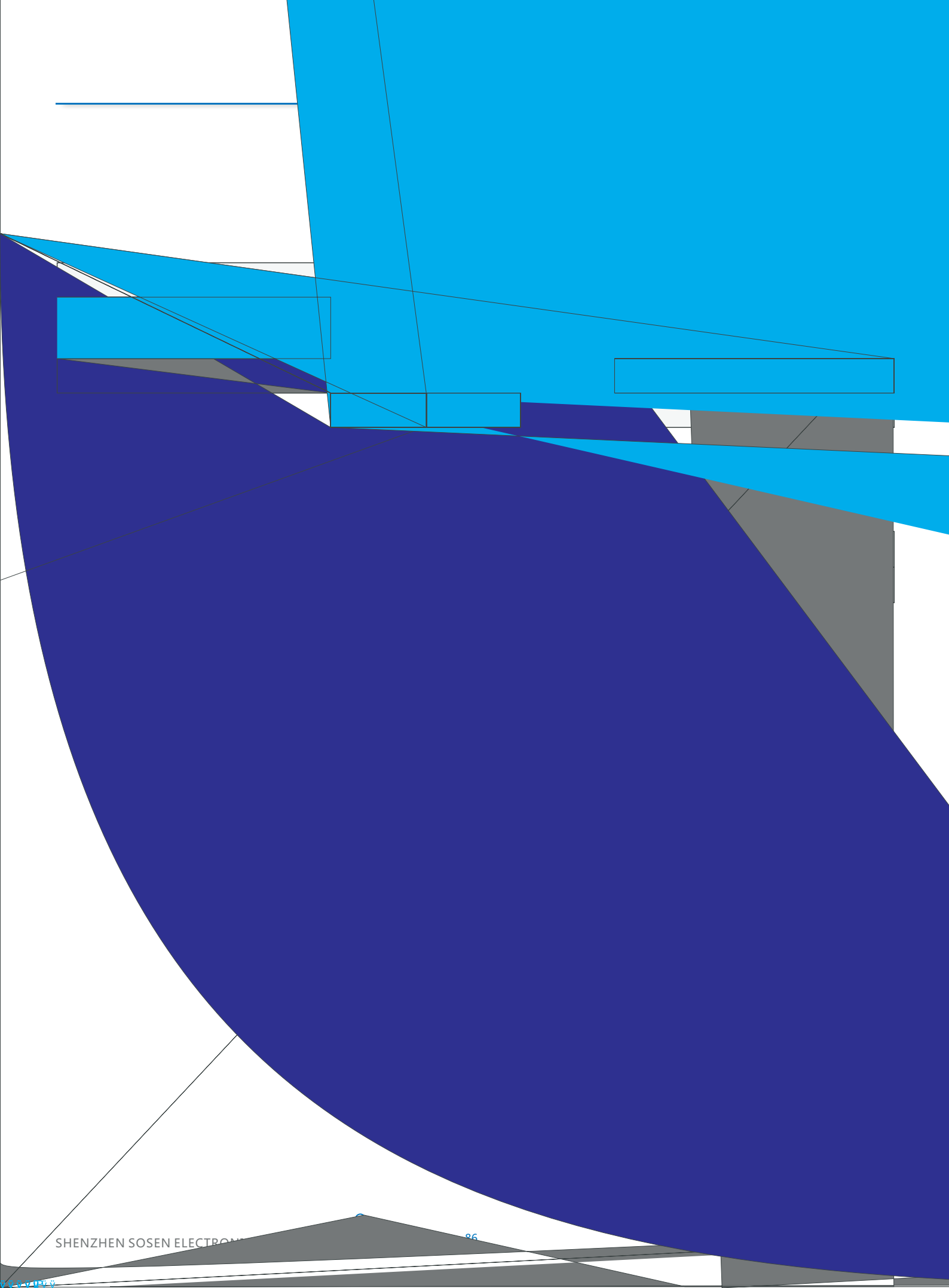


	100Vac		277Vac	
	90Vac		305Vac	
	47Hz		63Hz	
			3.0A	100Vac

(120Vac)			60A	
(220Vac)			90A	冷机启动
(277Vac)				冷机启动
			0.5W	220Vac/50Hz , STB
	0.95	0.98		220Vac/50Hz , 满载
	0.90			100-277Vac/50Hz , 70-100%载
		8%	10%	220Vac/50Hz , 满载
			20%	100-277Vac/50Hz , 70-100%载

30322





SS-240CA LED



		10.5V	12V	12.5V	
				300mA	400mA 15
0-10V		0V		12V	DIM+ 110uA
		10%Iomax		100%Ioset	DIM+/DIM-
		0V		10V	
PWM	PWM	9.8V		10.2V	DIM+ 110uA
	PWM	0V		0.3V	DIM+/DIM-
	PWM	1KHz		2KHz	
	PWM	0%		100%	
		0Kohm		100Kohm	
		10%Iomax		100%Ioset	DIM+ 110uA
		0.7V	0.8V	0.9V	
		0.8V	0.9V	1.0V	
DALI		1-170(10%)		254(100%)	
DALI		DALI-2			
	75	62,000 hours			80%
	MTBF	200,700 hours			220Vac, 25 (MIL-HDBK-217F)
		IP65			
		90			
		5			75
		2100g			
		182mm*71.5mm			x

25 LED

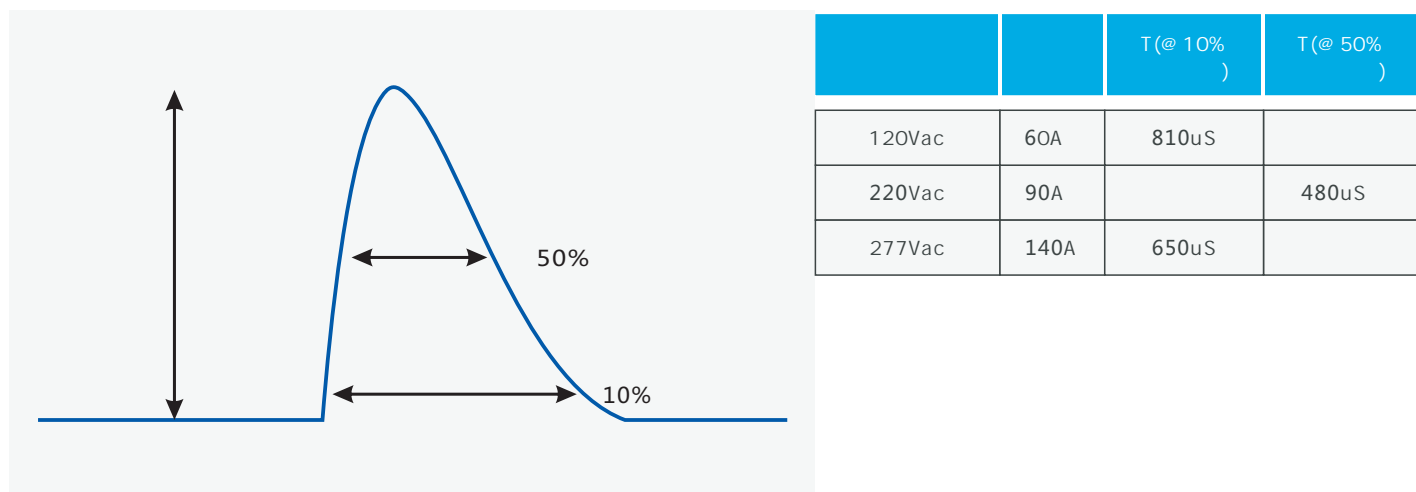




SS-240CA LED

	UL	ENEC	CCC	
	1600Vac	3000Vac	3750Vac	
	1600Vac	1500Vac	1875Vac	
	1600Vac	3000Vac	3750Vac	
	1600Vac	1000Vac	1000Vac	
	500Vac	1000Vac	1000Vac	
	500Vac	250Vac	500Vac	
	10MΩ		500Vdc	
	0.1Ω		25A/1min	
	0.75mA		277Vac	

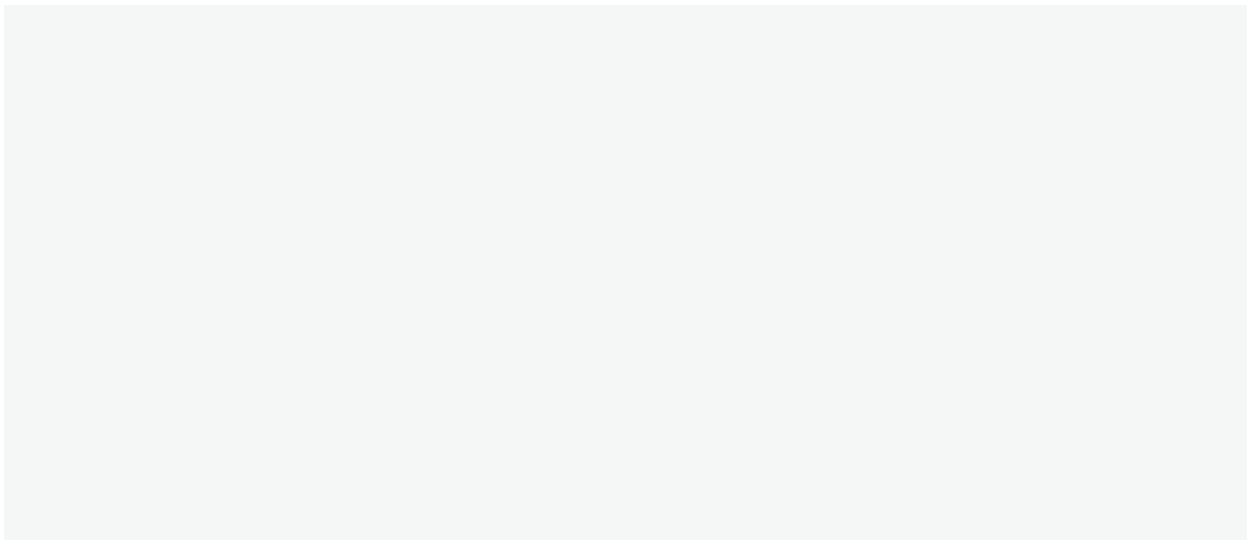
1. EMC
 2. LN
 3. CCC
- IEC 60598-1:2014 10.2 " "



SS-240CA LED

Vs. (/AOC)

Vs. (Vin=120Vac)



—————

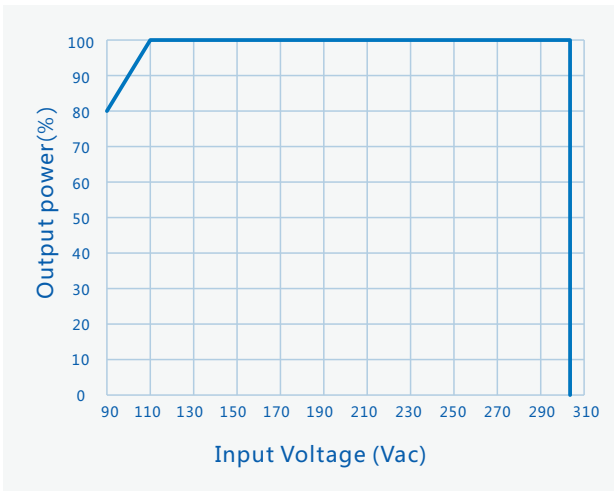


Vs.

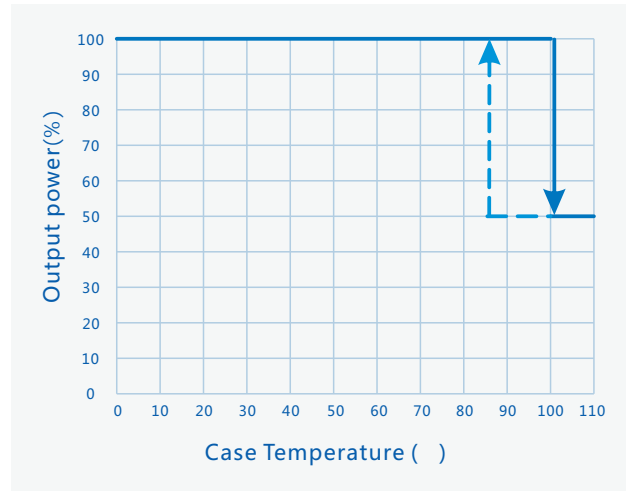
Vs.



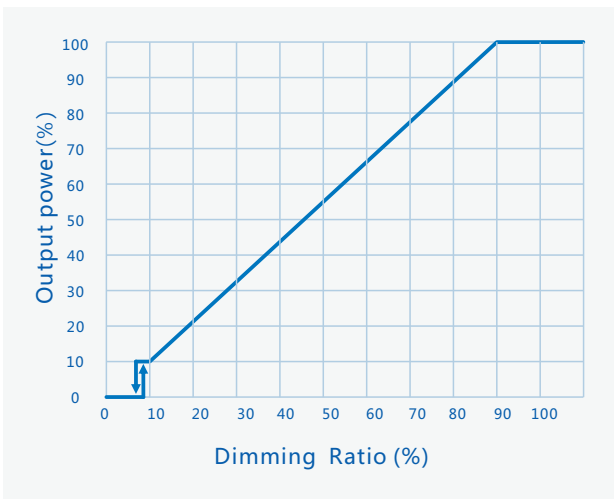
Vs. (55)



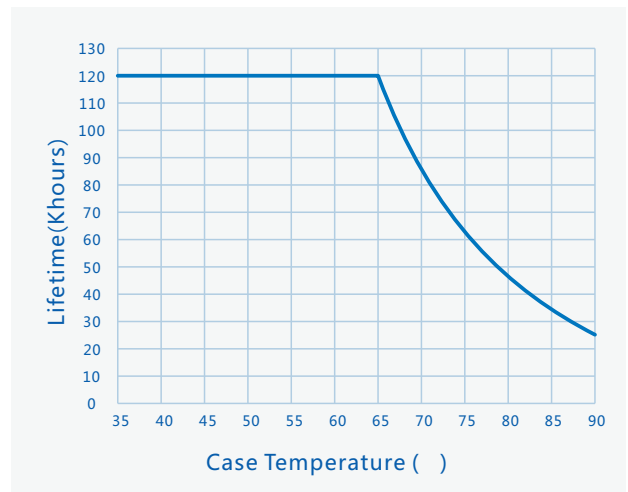
Vs.



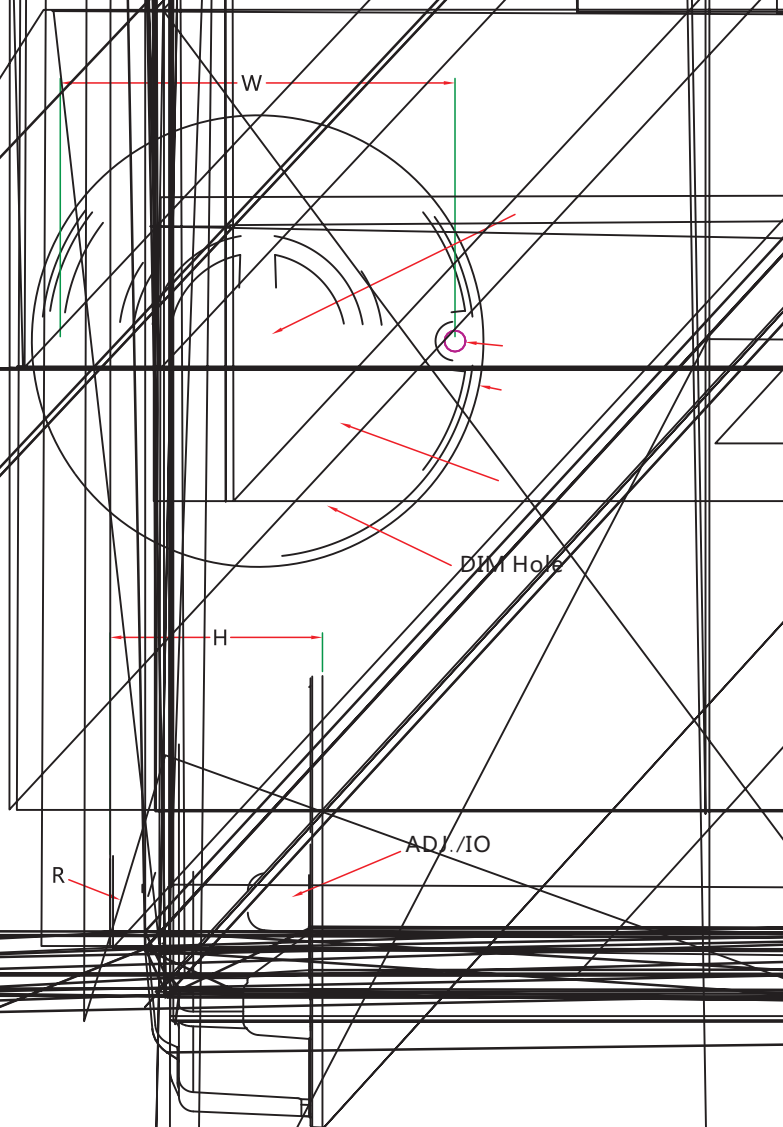
Vs.



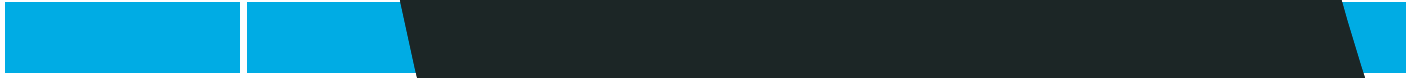
Vs.



		mm(In.)
PG	A	M12*1.5
	4-B	8.5(0.33)
	D	182.0(7.17)
	H	71.5(2.82)
	Z	M12*1.75(207mm) G1/2(17mm)
	R	M4*0.7
	W	162.0(6.38)
Tc	X	46(1.8)
Tc	Y	8(0.31)



SS-240CA



V00	00

